

DRAWings® 6 PRO

The design, embroidery and rhinestone solution™

DRAWings® 6 is here!

DRAWings® has been the first embroidery software to be fully integrated with a graphics designing software. Now, DRAWings® 6, goes one step beyond with the powerful combination of its new easy-to-use built-in designer and its ability to work seamlessly with a graphics software left intact! Create your own designs from scratch with far more ease, transform and edit shapes, add text, all in 3D designing mode!

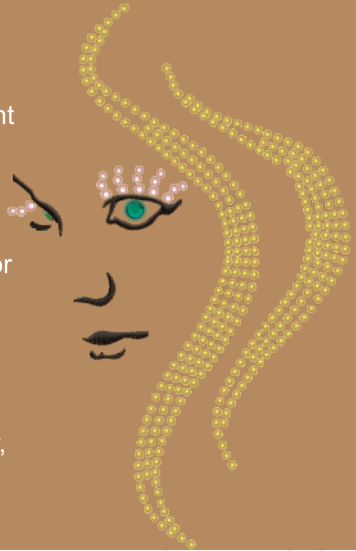


Fill designs with any shape

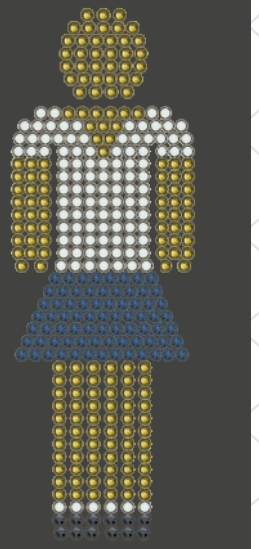
- ⌘ Create Fill Array with any shape
 - ⌘ Create Outline Array with any shape
 - ⌘ Create Fill Array from Clipart design
 - ⌘ Create Outline Array from Clipart design
 - ⌘ Change Array fill or outline by using a different shape as fill.
 - ⌘ Create a Fill or Outline Array as clone object.
- Adjust the original shape and the changes are automatically applied at the objects inside the Fill Array.

Designs with Crystals

- ⌘ Insert single crystal objects anywhere you like
- ⌘ Select crystals from different palettes.
- ⌘ Select the crystal Size you want from any selected palette.
- ⌘ Select the Shape/Size/Color of the crystal you want to apply from any current palette.
- ⌘ Ability to choose between various fills, like Rectangle, Shape fit, Circular, Contour, Line fit and Single line

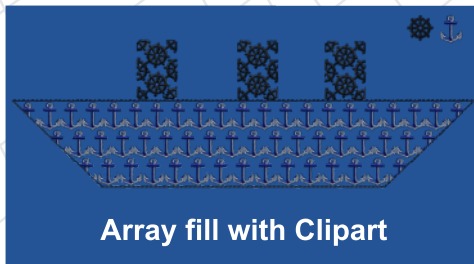


- ⌘ Add offset to Crystal fill/outline
- ⌘ Adjust horizontal and Vertical spacing between crystals
- ⌘ Rotate and Slant crystal fills
- ⌘ Separate crystal fill/outline to each sub crystal object
- ⌘ Ability to edit the Crystal fill container
- ⌘ Adjust crystals cut offset (distance of knife from the crystal)
- ⌘ Adjust crystals minimum hole spacing (distance between crystals)



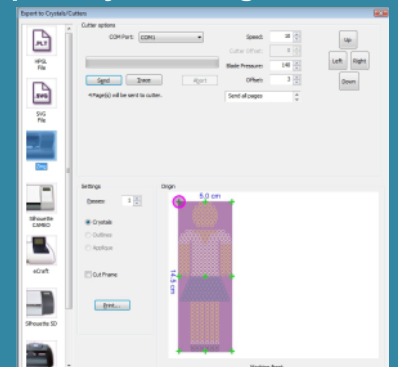
Clipart library

Insert Clipart, Search clipart by tags, filter designs by tags, Different views in the clipart library dialog for easier selection, Add – Delete tags on every clipart, Rename clipart name and add any design to Clipart

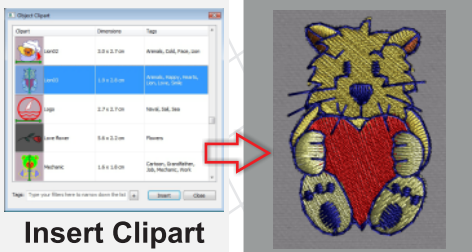


Array fill with Clipart

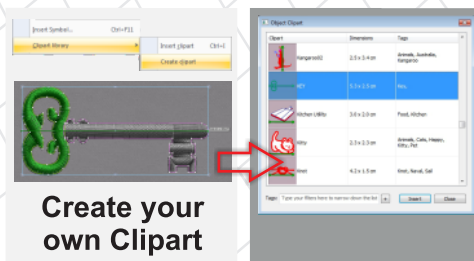
Export crystal designs to cutters



Export crystal designs to most widely used cutters and prepare them for the hotfix process



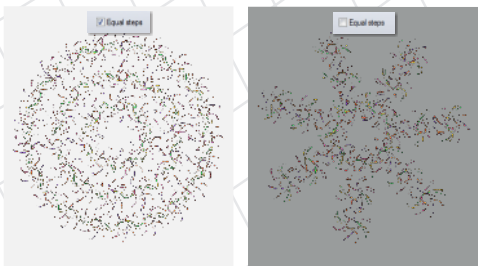
Insert Clipart



Create your own Clipart

Circular array Contour ability with or without Equal steps

Create beautiful complex circular contoured designs easily and use them on your embroideries, quilts or any other craft.



Colorful or monochrome photo-stitch

You have the ability to either create CMYK (Cyan, Magenta, Yellow, Black) photo-stitch designs or Monochrome in any color you prefer.



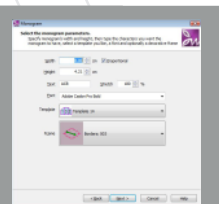
Monochrome Photo-stitch

Complete Monogramming tool

- ⌘ 35 Monogramming templates designs
- ⌘ Monogramming wizard to easily create monograms
- ⌘ Ability to select Font from every True Type font available in the system.
- ⌘ Includes 132 borders, 51 corners and 95 side embroidery designs to use with your monograms
- ⌘ Ability to specify which section of a character will be under or above when two or more are overlapping.



Monogram with Border design



Monogram wizard



Monogram with sides

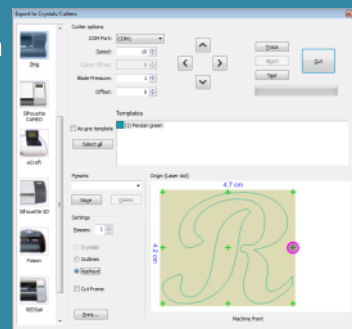


Overlapping Monogram with Corner designs

Main New Features

- ⌘ Create perfect designs with flat back crystals-rhinestones
- ⌘ You can now fill any shape with an array of any other design. Use your imagination and create unique designs.
- ⌘ Create your monograms easily by using any of the 25 templates combined with any of the 132 borders, 51 corners and 95 side embroidery designs that are included.
- ⌘ Ability to connect the software with most Cutters in the market and cut appliqué/quilt fabrics or a material that will hold the rhinestone design.
- ⌘ Circular array Contour ability with or without Equal steps
- ⌘ Improved Text editor with auto-complete functionality.
- ⌘ Group the objects by color on the Sequence Manager
- ⌘ Besides True Type fonts you can now use all Open Type fonts for your text artwork.
- ⌘ You can now save your designs to .VP3 embroidery file format, as well.
- ⌘ Improved Macro selection dialog
- ⌘ Implement inertia / kinetic scrolling
- ⌘ And many many more...

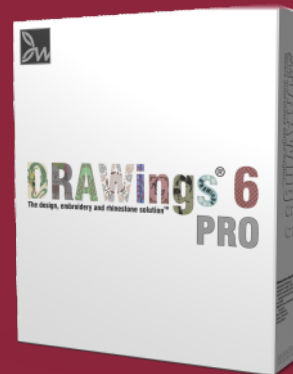
DRAWings® 6 can connect the software with most Cutters in the market and cut appliqué/quilt fabrics or any other material your cutter can cut by simply sending the design you have created to the cutting machine.



DRAWstitch®

TECHNOLOGY
www.drawstitch.com

Includes:



Copyright © 2012 DRAWstitch Ltd. All rights reserved.

DRAWings and DRAWstitch names and logos are trademarks and/or registered trademarks of DRAWstitch Ltd.

Wings' modular, and Wings Systems names and logos are trademarks and/or registered trademarks of Wings Systems Ltd.